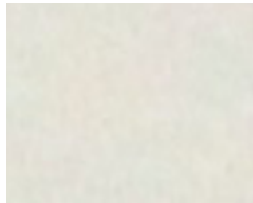


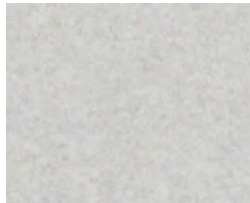
ALCANTARA

KEYSTON BROS IS THE EXCLUSIVE USA DISTRIBUTOR OF ALCANTARA SUEDE

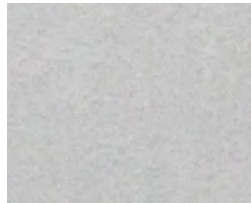
Alcantara is an Italian synthetic suede composed of 68% polyester and 32% polyurethane. In comparison to leather and other suede products in the marketplace, Alcantara is easy to clean, offers more grip and durability, reduces glare on the windshield, and remains cool to the touch.



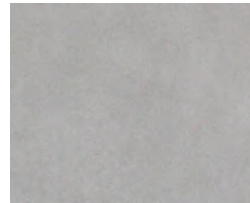
2911
Pearl White



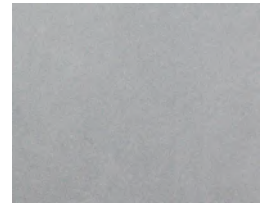
4978
Silver Grey



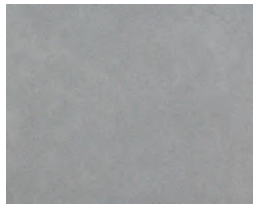
2934
Orion Grey



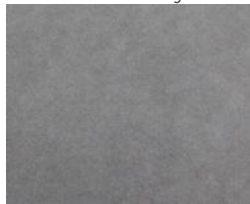
2942
Sand Grey



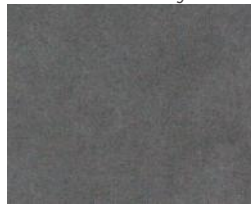
2932
Mouse Grey



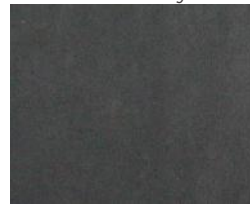
2938
Basalt



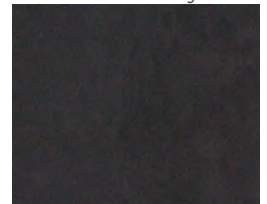
2957
Slate Grey



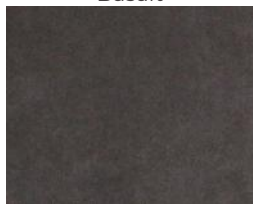
9052
Dark Grey



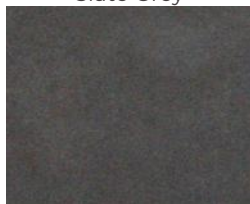
9002
Charcoal Black



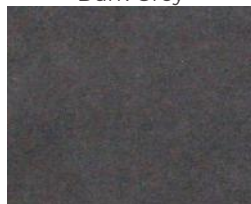
9040
Deep Black



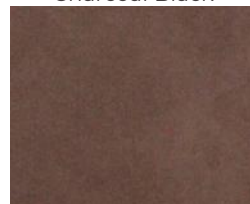
6833
Raw Amber



9500
Dark Brown



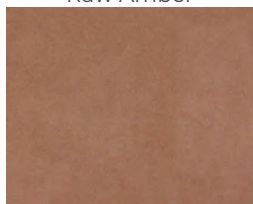
9008
Brombeer



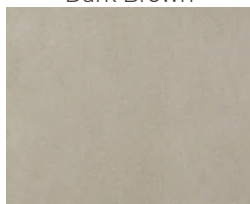
2910
Chocolate



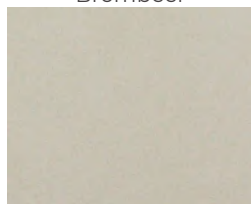
9036
Aubergine



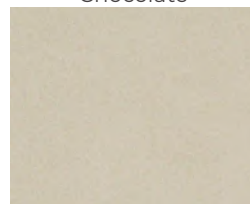
2930
Hazlenut



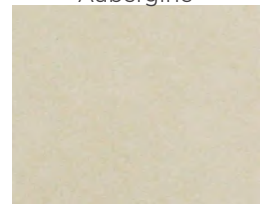
1112
Pergament



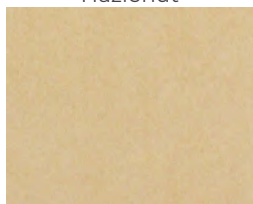
2901
Mushroom



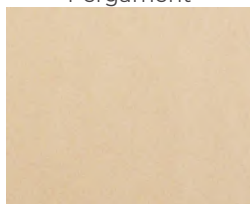
2974
Java



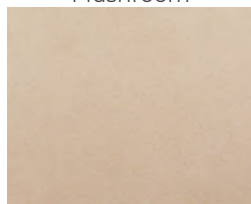
1110
Amber Glow



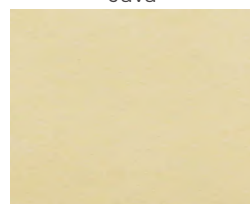
2940
Moccasin



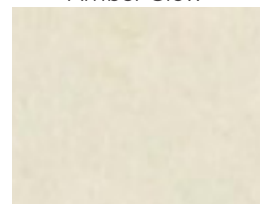
1108
Sand Rose



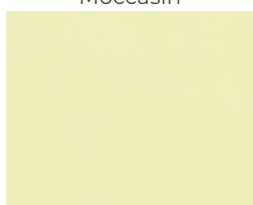
1510
Pink Pearl



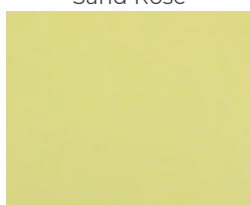
2909
Bright Nature



2984
Helios



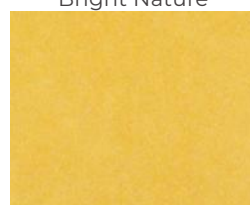
1041
Soft Green



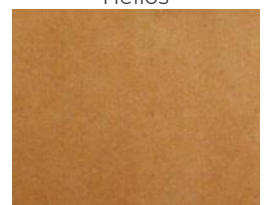
1045
Lime Tree



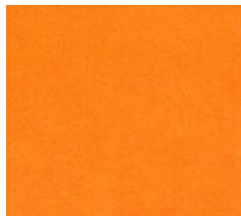
1452
Lemon Yellow



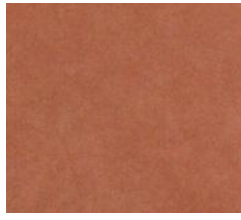
1125
Caramel



4914
Sienna



2969
Mango



4097
Rust



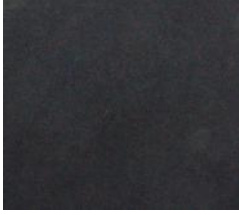
2916
Ruby



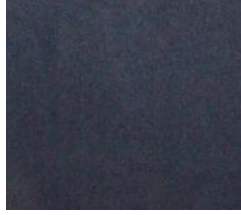
4996
Red



9076
Red Wine



9980
Deep Blue



9041
Royal Blue



6408
Signal Blue



7586
Cobalt Blue



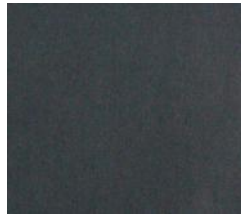
4175
Light Blue



9022
Tobago



9073
Emerald



6406
Deep Green



3322
Kaki



2156
Mint

GENERAL SPECIFICATIONS

Width	56"
Weight	~310 g/m ²
Roll Size	54.7 yards
Composition	68% Polyester 32% Polyurethane

FLAME RETARDANCY SPECIFICATIONS

CAL-TB 117-2013	Passes
NFPA 260	Passes
FMVSS 302	Passes

	PREFIX	SUFFIX
PANNEL	ALCP	
PANNEL PERF	ALCP	P
PANNEL PERF MINI	ALCP	M
SOFT	ALCS	

Example:

Part Number 9008 -
 Pannel: ALCP9008
 Pannel Perf: ALCP9008P
 Pannel Mini Perf: ALCP9008M
 Soft: ALCS9008

PERFORMANCE SPECIFICATIONS

Abrasion	100,000 DR
Stain Resistant	Yes

CLEANING SPECIFICATIONS

It is recommended, depending on the type of stain, that you should use water, lemon juice, or pure ethyl alcohol. For more information on cleaning Alcantara please visit www.keystonbros.com.



MB-4 Perforation Style



S-2000 Mini Perforation Style