

ANTERO

GENERAL SPECIFICATIONS

Width	Approx. 57.50"
Weight	17.824 oz/linear yard
Composition	73.82% Polyester, 16.94% Nylon, 6% PIR Poly, 3.24% PCR Poly
Repeat	7.313" H x 6.031" V

RECOMMENDED APPLICATIONS



WORKSPACE



HOSPITALITY



RESTAURANT



SENIOR
LIVING



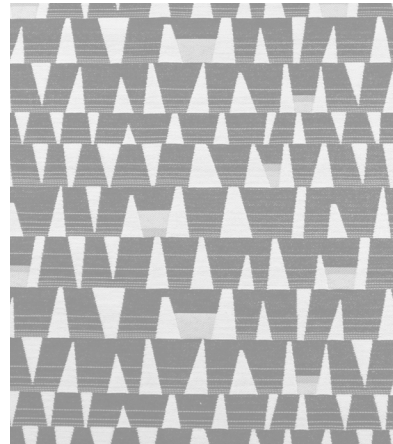
*ACT® Registered Certification Marks

FLAME RETARDANCY SPECIFICATIONS

CAL-TB 117-2013	Passes
UFAC Class 1	Passes

PERFORMANCE SPECIFICATIONS

Abrasion	102,000 DR
Colorfastness to Crocking	Wet: 3 Min Dry: 4 Min
Seam Slippage	Fill: 103 Warp: 76
Tensile Strength	Fill: 472 Warp: 151
Tear Strength	Fill: 32 Warp: 10
Colorfastness to Light	Class 4 at 40 Hours
Brush Pill	Class 4
Cleaning Code	WS – Solvent or Spot Clean



ANTERO - FULL REPEAT