

GRIFFITH

GENERAL SPECIFICATIONS

Width	54"
Weight	20.28 oz/linear yard
Composition	49% Polyester, 51% Recover Upcycled Cotton
Backing	KS-1
Repeat	1.125" H x 1.25" V
Railroaded	Yes

FLAME RETARDANCY SPECIFICATIONS

CAL-TB 117-2013	Passes
-----------------	--------

PERFORMANCE SPECIFICATIONS

Abrasion	100,000 DR
Colorfastness to Crocking	Wet: Min. 3 Dry: Min. 4
Seam Slippage	Fill: 78.6 Warp: 74
Tensile Strength	Fill: Min. 50 Warp: Min. 50
Tear Strength	Fill: Min. 6 Warp: Min. 6
Colorfastness to Light	40 Hours
Cleaning Code	S

CLEANING INSTRUCTIONS

Only mild, pure and water free dry cleaning solvents may be used for cleaning in a well ventilated area. Do not saturate. **DO NOT USE WATER.** Use of water based or detergent based solvent cleaners may cause excessive shrinkage and staining. Water stains may become permanent and impossible to remove with solvent cleaning agents. Cushion covers should not be removed and dry cleaned.

RECOMMENDED APPLICATIONS



WORKSPACE



HOSPITALITY



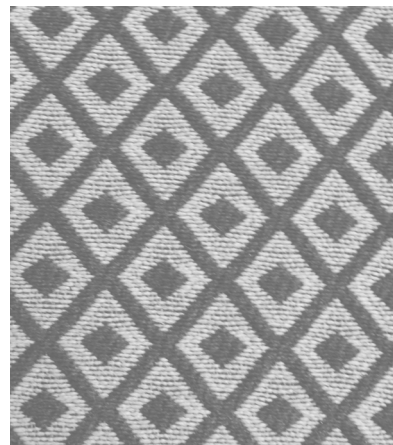
RESTAURANT



SENIOR
LIVING



*ACT® Registered Certification Marks



GRIFFITH - FULL REPEAT