

PALMER

GENERAL SPECIFICATIONS

Width	54"
Weight	12.90 oz/linear yard
Composition	87% Polyester, 13% Solution Dyed Polyester
Backing	KS-1
Repeat	14.625" H x 6.625" V
Railroaded	Yes

FLAME RETARDANCY SPECIFICATIONS

CAL-TB 117-2013	Passes
-----------------	--------

PERFORMANCE SPECIFICATIONS

Abrasion	100,000 DR
Colorfastness to Crocking	Wet: 5 Dry: Min. 4
Seam Slippage	Fill: 47 Warp: 53
Tensile Strength	Fill: Min. 50 Warp: Min. 50
Tear Strength	Fill: Min. 6 Warp: Min. 6
Colorfastness to Light	Min. Class 4 at 2200 Hours
Cleaning Code	WS - Bleach Cleanable
Mildew Resistant, Fade Resistant, Water Repellent	Yes

CLEANING INSTRUCTIONS

Spot clean with upholstery shampoo, foam from a mild detergent, or mid dry cleaning solvent. Pretest a small, inconspicuous area before proceeding. Do not saturate. Pile fabrics may require brushing with a non-metallic, stiff bristle brush to restore appearance. Hot water extraction or steam cleaning is not a recommended cleaning method. Cushion casings should not be removed and laundered or dry cleaned. To prevent overall soiling, frequent vacuuming or light brushing with non-metallic, stiff bristle brush to remove dust and grime is recommended. When cleaning a spill, blot immediately to remove spilled material. Clean spots or stains from the outside to the middle of affected area to prevent circling. *Use a professional furniture cleaning service when an overall soiled condition has been reached.*

RECOMMENDED APPLICATIONS



WORKSPACE



HOSPITALITY



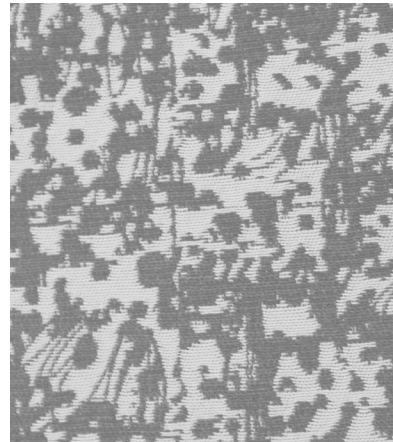
RESTAURANT



SENIOR
LIVING



*ACT® Registered Certification Marks



PALMER - FULL REPEAT