

# PRISM

## GENERAL SPECIFICATIONS

Width	54"
Weight	13.29 oz/linear yard
Composition	98% Sunbrella® Acrylic, 2% Other Fiber
Repeat	5.3" H x 5.3" V

## RECOMMENDED APPLICATIONS



WORKSPACE



HOSPITALITY



RESTAURANT



SENIOR  
LIVING



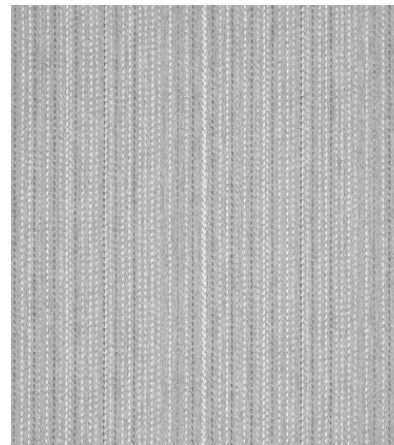
\*ACT® Registered Certification Marks

## FLAME RETARDANCY SPECIFICATIONS

CAL-TB 117-2013 Passes

## PERFORMANCE SPECIFICATIONS

Abrasion (ASTM D4157 Option 1 #10 Cotton Duck)	Fill: 100,000 DR Warp: 90,000 DR
Colorfastness to Crocking	Wet: 5 Dry: 5
Seam Slippage	Fill: 86.33 Warp: 94.83
Tensile Strength	Fill: 426.23 Warp: 203.70
Tear Strength	Fill: 34.63 Warp: 94.83
Water Repellency	Spray Test: 80
Brush Pill	Class 4.47 (ASTM D3511)



PRISM - FULL REPEAT



sunbrella®  
CONTRACT